

UTSI SSL VPN

(Supplied instructions from Chrome browser, other browsers may vary.)

(Mac users need to access this link: <https://itunes.apple.com/us/app/sonicwall-mobile-connect/id466931806/> to install the recommended client. After installation you will proceed with access information below.)

- To access UTSI VPN go to following link- <https://access.utsi.edu:4433>
(Link can ONLY be reached from outside the UTSI network)
- This will bring you to the UTSI Welcome screen.
(Enter your UTSI username and password) Welcome screen will repeat giving you access to the NetExtender client download

THE UNIVERSITY OF TENNESSEE
KNOXVILLE
SPACE INSTITUTE AT TULLAHOMA

UTSI - Virtual Office

Welcome to the UTSI SonicWALL Virtual Office


UTSI SonicWALL Virtual Office provides secure Internet access for remote users to log in and access private network resources via SSLVPN technology.

User Name:

Password:

Domain:

- Click the ([here](#)) to download the client for your device.

 **UTSI - Virtual Office** Welcome, tgarner! [Logout](#)

Welcome to the UTSI SonicWALL Virtual Office


UTSI SonicWALL Virtual Office provides secure Internet access for remote users to log in and access private network resources via SSLVPN technology.

Click a pre-configured bookmark or create your own to gain secure Internet access to internal corporate resources.

Launch NetExtender to create an SSLVPN tunnel to your corporate network for full network access.

Click [here](#) to download Windows Mobile NetExtender Client

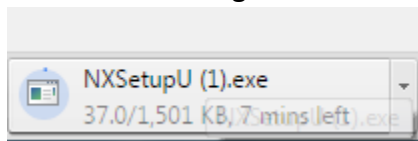
Click [here](#) to download Windows NetExtender Client



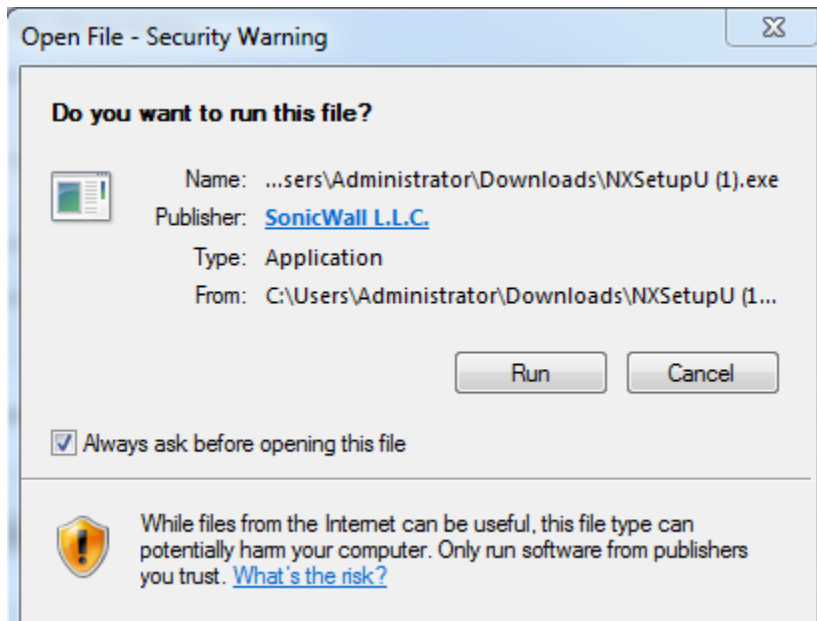
 NetExtender Help >>	 Virtual Assist
---	---

Virtual Office Bookmarks ▾	Host/IP Address	Service	Configure
No Bookmarks			
Add bookmark			

- Download will begin:

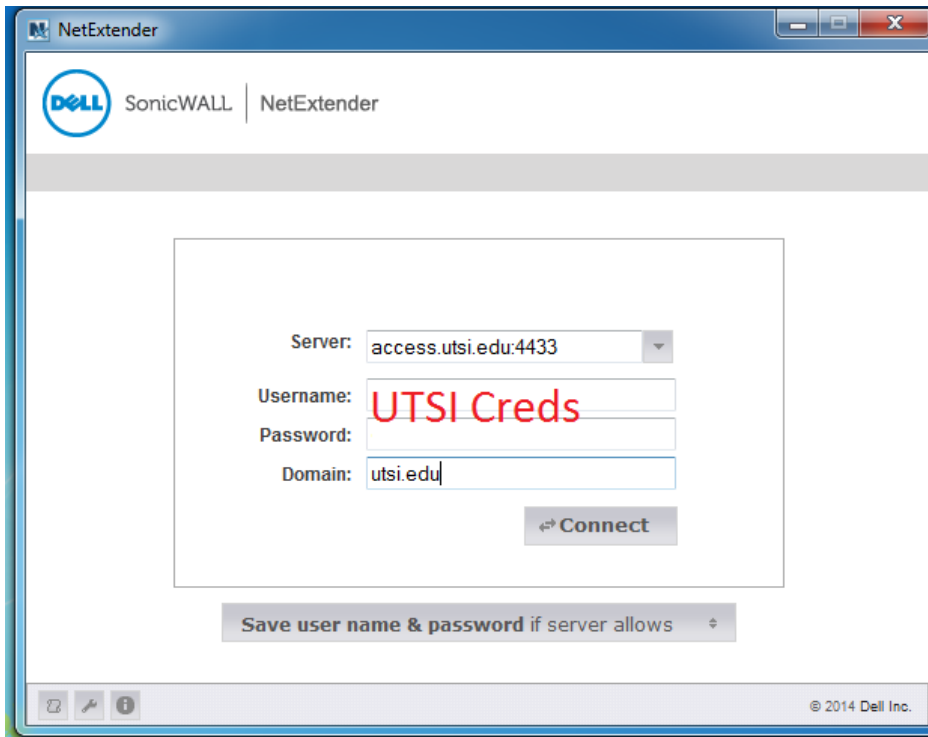


- Run NetExtender install

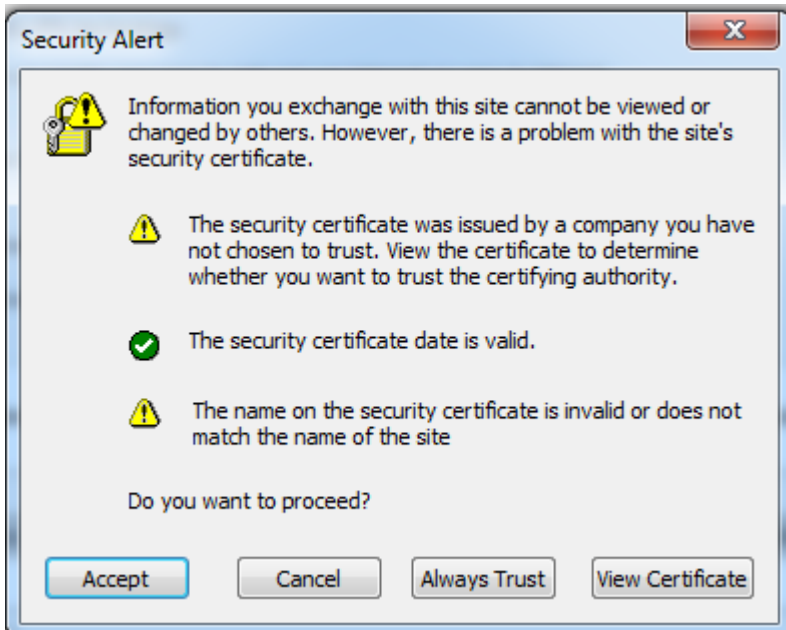


Choose all defaults- Next, Accept license and Next, Next, Install and Finish

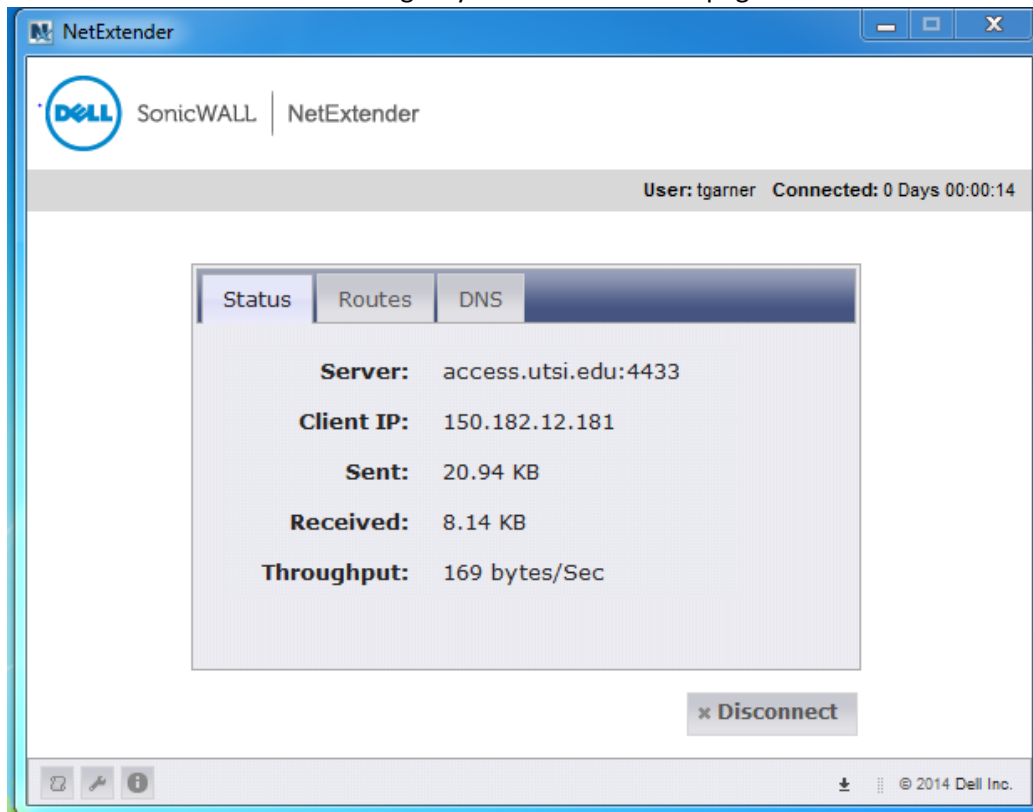
- Let NetExtender start automatically; Enter the following:



- Connect
- Always Trust



- Connection should establish and give you and information page



- Your connection has now been established and you should be able to access anything inside of the UTSI network.